

**Gunjan and Associates.**  
**Architects, Engineers, Interiors &**  
**Landscape Designers,**  
 141, Sainik Nagar, Raebareli Road  
 Lucknow-226002.  
 Phone: 9838818489  
 E-Mail: arunjan@yahoo.com

**PROJECT - BOQ FOR FURNISHING WORKS.**

**BANK - GRAMIN BANK OF ARYAWART**

**BRANCH -BHAGWANT NAGAR**

**REGION - UNAAO**

**\* ALL WORKS TO BE DONE AS PER LIST OF MATERIALS**

**\*BLOCK BOARD/PLYWOOD/FLUSH DOORS - ( GREEN DURO/ARCHID/CENTURY/CORBET ---NO ALTERNATE BRAND FROM THE SAME MANUFACTURER ALLOWED .)**

**\*IT IS NECESSARY TO FILLED THE RATES OF ALL THE ITEMS MENTIONED BELOW .**

**\*ALL ITEM TO EXCLUSIVE OF TAXES .**

**\*ALL WORKS TO BE DONE AS PER TENDER CONDITIONS.**

S.NO	DESCRIPTION OF ITEM	QUANTITY	UNIT	RATE (Rs.)	AMOUNT (Rs.)
<b>A.</b>	<b>FURNISHING WORKS.</b>				
	<b>ENTRANCE DOOR (WITH ECTHING) (HEIGHT -8' ONLY , THE GLASS WILL BE 8MM THICK</b>				
	Providing and fixing in position partly glazed aluminium entrance doors and windows, using 63mm x 38mm (2mm thick) anodized (Colour – Aluminium / Black, Thickness - 25.0 micons min.) aluminium extruded sections (Make - Indal / Hindalco or equivalent) for horizontal (at 0mm, 900mm, 2100mm, 2550mm and ceiling levels) & vertical (at 600mm c/c approx.) divisions or as per site conditions for framework. It shall have 12mm thick water proof ply, covered on both sides, with 1mm thick laminate (from 0mm to 900mm & from 2100mm to 2550mm and up to ceiling levels) in shade and pattern approved by the Architect and <b>8 mm thick float glass</b> (from 900mm to 2100mm) both fixed with anodized aluminium beading using neoprene beading and rubber gasket. The job shall also include for provision of laying conduits, switch boxes etc.It shall include for door shutters,				
	as per required width and height. It shall be made out of 83mm x 44mm (2mm thick) for styles, top, middle and 100mm x 44mm (2mm thick) for bottom rail, made out of anodized (Colour – Aluminium / Black, Thickness - 25.0 micons min.) aluminium sections for framework. It shall have 12mm thick water proof ply, covered on both sides, with 1mm thick laminate (from 0mm to 900mm) in shade and pattern approved by the Architect and 8mm thick float glass (from 900mm to 2100mm) both fixed with anodized aluminium beading using neoprene beading and rubber gasket. Each shutter shall include anodized 100mm dia. 2 Nos. handles, 250mm long tower bolts, floor springs/sliding arrangement/hydraulic door closer (heavy duty), mortise locks, etc. The rate shall include cost of all materials, labour, T&P, wastages, etc. required for proper completion of work. The erection of partition, doors and windows shall include for expansion bolts cleats,	<b>95</b>	<b>Sq.Ft</b>		

2	<b>Low Height Wooden Partitions (partly glazed) and Flap Doors</b>				
	<p>Providing and fixing of low height wooden partitions made out of 50mm x 40mm kail/partal wood (with anti-termite) under framing for horizontal (at 0mm, 75mm, 750mm, 900mm, 1500mm, levels) &amp; vertical (at 600mm c/c approx.) divisions or as per site conditions. It shall be covered with 6mm thick water proof ply with 1mm thick laminate, (from 0mm to 1500mm) on both sides. The design shall have 6mm x 4mm grooves (horizontal or vertical) at various levels, as suggested by the Architect.</p>				
	<p>It shall also have teak wood edging (size - 75mm x 25mm, as per profile) on all exposed edges with melamine finish. It shall have <b>12 mm thick float glass</b> (from 900mm to 1500mm) fixed with teakwood beading (size - 30mm x 20mm, as per profile) with melamine finish. The job shall also include for provision of laying conduits, switch boxes etc. The erection of partition shall include for expansion bolts cleats, clamps bolts, nuts, screws, rivets and other accessories, all complete up to the satisfaction of the Architect. All flap door opening shall have rebated teak wood framework (size - 75mm x 25mm, as per profile) on vertical (2 Nos.) sides</p>				
	<p>, with melamine finish and rebate of 40mm x 12mm, all complete up to the satisfaction of the Architect. It shall also include for flap door shutters, as per required width and 1500mm high. It shall be made out of 75mm x 25mm kail/partal wood (with anti-termite) under framing for styles, top, middle and 100mm x 25mm for bottom rail. It shall be covered with 6mm thick water proof ply with 1mm thick laminate, (from 0mm to 1500mm) in shade and pattern approved by the Architect, on both sides. The design shall have 6mm x 4mm grooves (horizontal or vertical) at various levels, as suggested by the Architect. Flap door shutters shall have teak wood edging (size - 40mm x 10mm, as per profile) on all sides, with melamine finish. Each shutter shall have hinges, floor springs/sliding arrangement/hydraulic door closer (heavy duty), mortise locks, etc. The rate shall include cost of all materials, labour, T&amp;P, wastages, etc. required for proper completion of work, all complete to the satisfaction of the Architect.</p>	95	Sq.Ft		
3	<b>CASH CABIN PARTITION(HT-7' ONLY)</b>				

	<p>Providing and fixing of wooden partitions made out of 50mm x 40mm kail/partal wood (with anti- termite) under framing for horizontal (at 0mm, 75mm, 750mm, 900mm, 1200mm, 2100mm and 2550mm and ceiling levels) &amp; vertical (at 600mm c/c approx.) divisions or as per site conditions. It shall be covered with 6mm thick water proof ply with 1mm thick laminate, (from 0mm to 1200mm and 2100mm to 2550 mm/ceiling levels) on both sides. The design shall have 6mm x 4mm grooves (horizontal or vertical) at various levels, as suggested by the Architect</p>				
	<p>It shall have decorative aluminium grill (from 1200mm to 2100mm) fixed with teak wood beading (size - 30mm x 20mm, as per profile) with melamine finish. The job shall also include for provision of laying conduits, switch boxes etc. The erection of partition shall include for expansion bolts cleats, clamps bolts, nuts, screws, rivets and other accessories, all complete up to the satisfaction of the Architect.All door opening shall have rebated teak wood framework (size - 75mm x 50mm, as per profile) on vertical (2 Nos.)</p>				
	<p>and horizontal (1 No.) sides, with melamine finish and rebate of 40mm x 12mm, all complete up to the satisfaction of the Architect.It shall also include for door shutters, as per required width and 2100mm high. It shall be made out of 75mm x 25mm, kail/partal wood (with anti-termite) under framing for styles, top, middle and 100mm x 25mm for bottom rail. It shall be covered with 6mm thick water proof ply with 1mm thick laminate, (from 0mm to 900mm and other under frames) in shade and pattern approved by the Architect, on both sides.</p>				
	<p>The design shall have 6mm x 4mm grooves (horizontal or vertical) at various levels, as suggested by the Architect. It shall also have aluminium grill (from 900mm to 2025mm) fixed with teak wood beading (size - 20mm x 20mm, as per profile) with melamine finish. Door shutters shall have teak wood edging (size - 40mm x 10mm, as per profile) on all sides, with melamine finish. Each shutter shall have hinges floor springs/sliding arrangement/hydraulic door closer (heavy duty), mortise locks, etc. The rate shall include cost of all materials, labour, T&amp;P, wastages, etc. required for proper completion of work, all complete to the satisfaction of the Architect.</p>	290	Sq.Ft		
<b>4</b>	<b>Aluminium Grill Top (WITH WOODEN SUPPORT)</b>				

	Providing and fixing of aluminium grill with square size 75mm x 75mm - 8mm, on top of the cash cabins etc. The grill shall be tightly stretched and nailed to a wooden frame work, made out of 50mm x 40mm teak/hard wood (with anti-termites) members at 750mm c/c approx. both ways or as per site conditions. The erection of framework shall include for expansion bolts cleats, clamps bolts, nuts, screws, rivets and other accessories. All teak wood surfaces shall be painted with two coats of synthetic enamel over one coat of primer. The rate shall include cost of all materials, labour, T&P, wastages, etc. required for proper completion of work, all complete to the satisfaction of the Architect.	80	Sq.Ft		
<b>5</b>	<b>Glass Barrier on cash cabin and front glass for counter(12 MM NECESSARY)</b>				
	Providing and fixing glass barrier (as per profile and design) in front of cash and ledger counter made out of 12mm thick polished edged float glass (Make – Modi guard or equivalent). It shall have 25mm x 20mm teakwood beading (as/shape approved by the Architect) to hold the glass from sides and top (optional). All teak wood surfaces shall be melamine polished. The rates shall include for cutting (in geometrical shape) and polishing the edges, all complete to the satisfaction of the Architect.	55	Sq.Ft		
<b>6</b>	<b>Night Latch Locks.</b>	2	Nos.		
	Providing and fixing of night latch locks (Make – Godrej, Product Code - 9954 or equivalent) for Cash Cabins. It shall incorporate the following –				
	- 7 brass – lever with mechanism that deadlocks.				
	- Suitable for right handed or left handed, inside or outside opening doors.				
	- Safety catch to prevent entry even by key from outside.				
	- A special safety provision to prevent accidental lock out.				
	- Scratch resistant powder - coated finish.				
	All complete to the satisfaction of the Architect				
<b>7</b>	<b>Mortice Locks (with handle set).</b>	1	Nos.		
	Providing and fixing of mortise locks with handle set (Make – Godrej, Product Code - 5412 / 5414 or equivalent). It shall incorporate the following –				
	- 6 – brass lever.				
	- Suitable for right handed or left handed, inside or outside opening doors.				
	- The keyless latch shall be opened from either side of the door by turning				
	- It shall work as latch which locks from inside at the turn of a button and as a lock operable with a key from outside.				
	All complete to the satisfaction of the Architect.				
<b>8</b>	<b>Hydraulic Door Closure.</b>	2	Nos.		

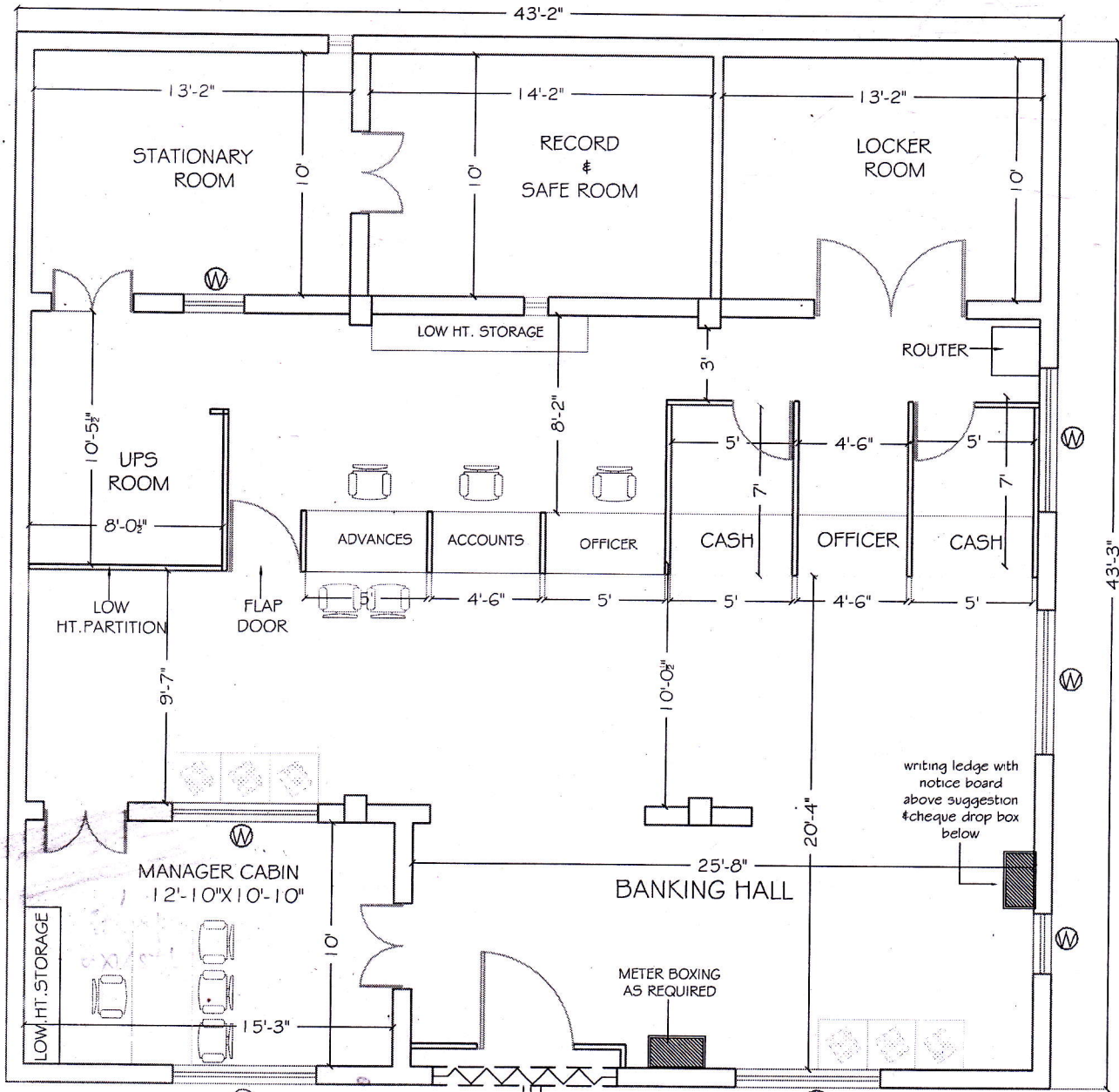
	Providing and fixing of hydraulic door closure (Make - Godrej, Product Code - 4539 or equivalent) for doors. It shall incorporate the following –				
	- Body manufactured from Aluminium extruded alloy machined to extreme accuracy.				
	- Rack and Pinion-made of machined alloy steel duly heat - treated.				
	- Adjustable closing speed.				
	- Suitable for right hand and left hand opening doors.				
	- Suitable for door/frame mounting.				
	- Suitable for door weight up to 60 kgs.				
	- Suitable for 180 / 100 degree door opening.				
	All complete to the satisfaction of the Architect.				
<b>9</b>	<b>Computerised Ledger &amp; Cash Counter</b>				
	Providing and placing in position ledger counter with top, vertical sides/dividers, skirting and fascia made out of 19mm thick water proof board with 1mm thick laminate (as/shade approved by the Architect) on all exposed surfaces. It shall also have 75mm x 40mm teak wood runners below the top and for footrest below. Every unit shall be provided with a side unit (size - W-500mm, H-750mm, D-500mm approx.), consisting of 150 mm deep drawer at top and a cabinet with open able/hinged shutter below				
	. The fascia of drawer and shutter of cabinet below shall be made out 19mm thick water proof board with 1mm thick laminate (as/shade approved by the Architect) and sides and bottom of drawer shall be made out of 12mm thick water proof ply. The side unit shall have CAM locks, handles, guides, sliding units, hinges, magnetic catcher's etc. of approved make. Every unit shall be provided with a keyboard drawer unit (size - W-550mm, H-100mm, D-300mm approx.) below. The counter shall have 100mm deep fascia, below the top, in which keyboard drawer unit shall be adjusted.				
	It shall be made out 19mm thick water proof board with 1mm thick laminate (as/shade approved by the Architect) and sides and bottom of drawer shall be made out of 12mm thick water proof ply. The unit shall have CAM locks, handles, guides, sliding units etc. of approved make. The job shall include for 6mm x 6mm grooves in between sides and open able drawers and hinged shutters. All the exposed edges of water proof board and ply shall be provided with 6mm thick teak wood/hard wood lipping. All teak wood surfaces shall be melamine polished and other internal surfaces shall be painted with two coats of synthetic enamel over one coat of primer, all complete to the satisfaction of the Architect.				
<b>a.</b>	<b>High Level</b>	10	Rg.Ft		
	High level (two levels) Computerised cash counter.				

	Lower level top shall be 900mm wide and at 750mm level from floor & upper level top shall be 250mm wide (and at 1150 mm level from floor				
<b>b.</b>	<b>Low Level</b>	15	Rg.Ft		
	Low level (two levels) Computerised ledger counter.				
	Lower level top shall be 900mm wide and at 750mm level from floor & upper level top shall be 150mm wide and at 900mm level from floor				
<b>10</b>	<b>Tables</b>				
<b>a.</b>	<b>Manager Table With 6 MM Glass Top size 4'-6"x 2'-6"x 2'-6"</b>	1	No.		
<b>b.</b>	<b>Officer Table With 6 MM Glass Top size 4'-6"x 2'-6"x 2'-6"</b>	1	No.		
	Providing and placing in position tables with top, vertical sides/dividers, skirting and modesty panel made out of 19mm thick water proof board with 1mm thick laminate (as/shade approved by the Architect) on all exposed surfaces. It shall also have 75mm x 40mm teak wood runners below the top and for footrest below. Every table shall be provided with a side unit (size - W-500mm, H-750mm, D-500mm approx.), consisting of 150 mm deep drawer at top and a cabinet with open able/hinged shutter below.				
	The facia of drawer and shutter of cabinet below shall be made out 19mm thick water proof board with 1mm thick laminate (as/shade approved by the Architect) and sides and bottom of drawer shall be made out of 12mm thick water proof ply. The side unit shall have CAM locks, handles, guides, sliding units, hinges, magnetic catcher's etc. of approved make. Every table shall be provided with a keyboard drawer unit (size - W-550mm, H-100mm, D-300mm approx.) below. The table shall have 100mm deep facia, below the top, in which keyboard drawer unit shall be adjusted. It shall be made out 19mm thick water proof board with 1mm thick laminate (as/shade approved by the Architect) and sides and bottom of drawer shall be made out of 12mm thick water proof ply. The unit shall have CAM locks, handles, guides, sliding units etc. of approved make.				
	The job shall include for 6mm x 6mm grooves in between sides and open able drawers and hinged shutters. All the exposed edges of water proof board and ply shall be provided with 6mm thick teak wood/hard wood lipping. All teak wood surfaces shall be melamine polished and other internal surfaces shall be painted with two coats of synthetic enamel over one coat of primer, all complete to the satisfaction of the Architect. Every table top shall be provided with 6mm thick float glass (as per profile) with polished and beveled (25mm wide) edges all complete to the satisfaction of the Architect.				

<b>11</b>	<b>Credenza</b>	1	Nos.		
	Providing and placing in position credenza of size - 1050mm x 500m x 680mm The top, vertical sides/dividers, skirting, bottom and intermediate shelves shall be made out of 19mm thick water proof board with 1mm thick laminate (As/shade approved by the Architect) on all exposed surfaces. It shall also have 6mm thick water proof ply on the back. Every credenza shall have a unit (size - W-450mm, H-675mm, D-500mm approx.)				
	The balance frontage shall have a cabinet with hinged shutter and intermediate shelf (1 No.) made out of 19mm thick water proof board with 1mm thick laminate (as/shade approved by the Architect), on all exposed surfaces. The sides and bottom of drawer shall be made out of 12mm thick water proof ply. The credenza shall have CAM locks, handles, guides, sliding units, hinges, magnetic catchers etc. of approved make. The job shall include for 6mm x 6mm grooves in between sides and open able drawers and shutters. All the exposed edges of water proof board and ply shall be provided with 6mm thick teak wood/hard wood lipping. All teak wood surfaces shall be melamine polished and other internal surfaces shall be painted with two coats of synthetic enamel over one coat of primer, all complete to the satisfaction of the Architect				
<b>12</b>	<b>Writing Table &amp; Brochure Holder</b>	1	No.		
	Providing and fixing in position (with rear wall) slip and customer writing desk (as per design) of over all size - 1200mm x 450mm x 300mm. The fixing shall include for expansion bolts, cleats, clamps, bolts, nuts, screws, rivets and other anodized accessories, all complete up to the satisfaction of the Architect				
	.The writing top and facia/sides shall be made out of 19mm thick water proof board with 1mm thick laminate (as per shade approved by the architect), on all sides and . It shall be laid over the base of 19mm thick water proof board (already considered in various items.) and fixed with araldite. It shall include for beveling and polishing at all the exposed edges. The rate shall include cost of all materials, labour, scaffolding, wastages, polishing and T& P etc. It shall be made out of 12mm thick water proof plywood (two surfaces of 6mm thickness, fixed together, where required) on rear and both sides.				
	The front shall be made out of 12mm thick glass (as per profile). It shall be fixed in the grooves, made in side members, in an inclined manner (as per profile in drawing enclosed) with a gap of 75mm (max.) in between. The space shall be further divided in four equal parts with help of 12mm thick water proof plywood. All edges of the glass shall be polished.All the exposed edges of water proof board and plywood shall be provided with 6mm thick teak wood/hard wood lipping. All teak wood surfaces shall be melamine polished and other internal surfaces shall be painted with two coats of synthetic enamel over one coat of primer, all complete to the satisfaction of the Architect				
<b>13</b>	<b>Complaint &amp; Suggestion Box</b>	1	No.		

	Providing and fixing in position complaints/suggestion box (as per design) with hinged shutter of size - 450mm x 600mm x 150mm made out of 19mm thick water proof board with 1mm thick laminate (as per shade approved by the architect) on all exposed surfaces. It shall have 6mm thick water proof				
	.The hinged shutter shall be made out of teakwood (section - 25mm x 50mm) framework, with 4mm thick float glass, fixed with teakwood (size - 12mm x 12mm) beading. The unit shall have cam locks, handles, spring hinges, magnetic catchers etc. of approved make. All the exposed edges of water proof board or ply shall be provided with 6mm thick teak wood/hard wood lipping. All teak wood surfaces shall be melamine polished and other internal surfaces shall be painted with two coats of synthetic enamel over				
<b>14</b>	<b>Notice Board</b>	2	No.		
	Providing and fixing in position notice board (as per design) of size - 900mm x 600mm x 150mm. The sides shall be made out of 19mm thick water proof board with 1mm thick laminate (as per shade approved by the architect) on all exposed surfaces.It shall have 12mm thick tack The front shall have 6mm thick float glass sliding shutter in two parts.				
	It shall also have 19mm wide two track aluminium channel for sliding arrangement, all around, along with locking arrangement.board (Make – Cellotex or equivalent) wrapped with stretched blazer cloth (Make- Raymonds), of Rs. 200.00 per Mt. (approx.) in colour and pattern approved by the Architect. It shall be fixed with help of kail/partal wood (sect. 19mm x 25mm) frame work. It shall be covered with 6mm thick water proof plywood, on the back. All the exposed edges of water proof board and ply shall be provided with 6mm thick teak wood/hard wood lipping. All teak wood surfaces shall be melamine polished and other internal surfaces shall be painted with two coats of synthetic enamel over one coat of primer, all complete to the satisfaction of the Architect.				
<b>16</b>	<b>THREE SEATER WOODEN BENCH</b>				
	P/F in position 3 seater wooden benches . Size of one SEAT to be 1'-9" x 1'-9". The bench to be made of 19 mm thick commercial board covered with 1 mm thick ply of approved shade and colour.The sette to be openable from the sides to enable storage space.	3	No		
<b>20</b>	<b>Column Pannelling, meter boxing,</b>	90.00	Sq.Ft.		
	Providing & fixing in position 2"x2" kailwood frame and finished with 6 mm thk. Commercial ply on both sides with 1.0 mm thk. Laminate on top as per instruction of the Architect				
	<b>GRAND TOTAL AMOUNT</b>				





NOTE- All window and ventilator to have grills to be 10mmx10mm bars @ 3" c/c spacing both ways.

ALTERNATIVE-01

job title

PROPOSED LAYOUT PLAN OF GRAMIN BANK OF ARYAVART BRANCH AT BHAGWANT NAGAR, UNNAO.

Drq. Title

LAYOUT PLAN

NORTH :-



Date :-

NOV- 2014

Chkd. By

GUNJAN AND ASSOCIATES  
ARCHITECTS, ENGINEERS, INTERIOR  
AND LANDSCAPE DESIGNERS.

3/55, VIPUL KHAND, GOMTI NAGAR,  
LUCKNOW-226010  
Phone: 2303118, 9838818489, 9839018489

*Manager's Cabin is already constructed.*



**GUNJAN & ASSOCIATES**

Architects, Engineers, Interiors &  
Landscape Designers,  
3/55, Vipul Khand, Gomti Nagar,  
Lucknow-226010.  
Phone: 0522-2303118, 9839018489  
**E-Mail: arunjan@yahoo.com**

**LIST OF MATERIALS FOR FURNISHING WORKS****List of Approved Materials**

<b>S. No.</b>	<b>Material</b>	
1	Commercial Board/ Ply Urea Bonded	Corbett,Truwood,duro
2	Laminate	Heritage,Greenlam,Durolam
3	Veneer	Century/Decolam/ Truwood/ Archid
4	Screw(Oxidised)	Gkw/ Nettle Fold
5	Hardware	Earl Bihari / Shalimar
6	Adhesive	Fevicol SH
7	Locks	Godrej
8	Floor Spring/Door Closures	Hyper/ Everite/ Hemco
9	Hinges.Tower Bolts,Handles	Brass Oxidised/ Epoxy Powder Coated (Heavy duty) with Steel Pin
10	Wood and Beadings	Teak Wood, Sal Wood
11	Glass	Modi, Float Glass, Saint Gobain
12	Paints	Nerolac, Berger, Asian, Dulux
13	Ceramic, Vetrified Tiles	Bell, Kajaria, Murudeshwar CeramicsJhonson, Varmora
14	Sanitary Fittings	Hindware, Parryware, Jaguar
15	Aluminium Door and Window Sections	Jindal, Indal and MK
16	Vertical Blinds	Vista, Sun
17	Drawer Channel	Flyrail/ Glydo/ Hettich
18	Soft Board	Cellotex
19	Surface Textures	Spectrum/ Heritage
20	Oil Bound Distemper	Berger Bison, Asian
21	Acrylic Emulsion	Berger Rangoli, Asian
22	Teak Wood	UP Teak
23	Fire Retardant Coating	Viper or Equivalent (Certified by CBRI)