

**FURNISHING ESTIMATE FOR THE PROPOSED INTERIORS FOR  
GRAMIN BANK OF ARYAWART HINGOT KHERA,AGRA BRANCH**

**THE CONTRACTOR TO USE ONLY THE SPECIFIED MICA .NO OTHER BRAND WILL BE ACCEPTED.**

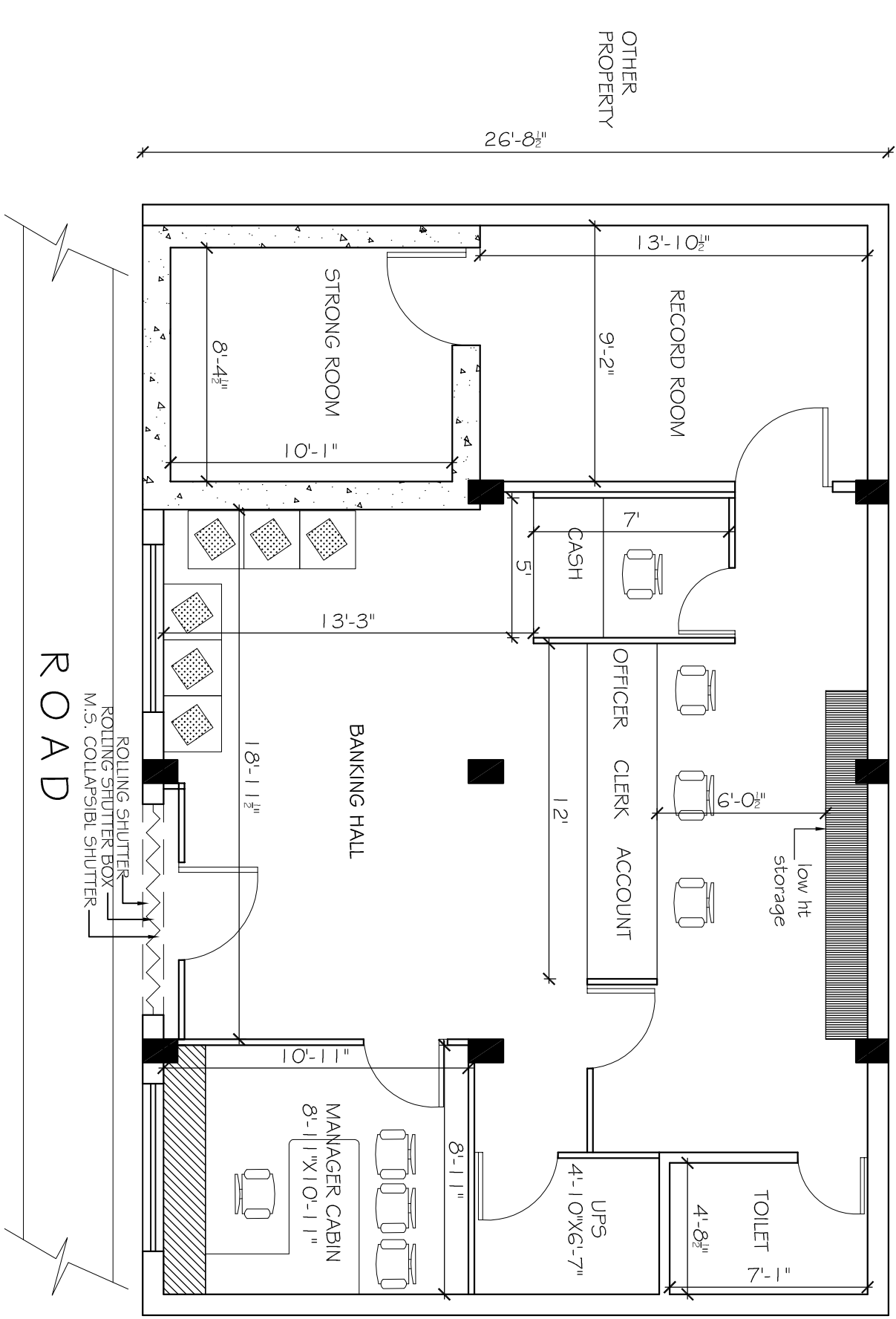
S.NO.	DESCRIPTION OF ITEM	QTY.	UNIT	RATE	AMOUNT
<b>1</b>	<b>CASH CABIN PARTITION</b>				
	Cash cabin partition made of both side 6.00 mm commercial ply on kail wood frame section 50x35 mm and 1.00 mm mica, aluminum grill partition and mica laminated aluminum grill door complete with locks, top of cash cabin covered by aluminum grill. Including all locks & handles,door closer. Size of cash cabin 5 ft x 7 ft x 7.5 ft, . and include Front of the cash Cabin to be glazed with 12 mm thick etching glass fixed in position by teak wood members complete to the satisfaction of the architect.The cash cabin to have night latches as per direction of the architect.This would also include decorative aluminium jali at the top of cash cabins fixed with teak wood members.(CASH CABIN TOP IS NOT INCLUDED IN THE MEASUREMENT)	165	Sft		
<b>2</b>	<b>CASH COUNTER</b>				
	Bank counter of approved design for cashier made of 19.00 mm commercial block board and mica 1.00 mm thick of approved brand and colour on front customer top and writing desk. Height of counter from customer side 114 cm (45").width of writing desk 75 cm.(30") with provision of cupboard after every 1.20 mts made of 19.00 mm block board with 1.0 mm sunmica pasted on both side( inner and outer) , and teakwood beading complete with quality polish finish. Mica pasted on both sides external & internal including all locks & handles with door closer .	5	Rft		
<b>3</b>	<b>ACCOUNTS COUNTER</b>				
	Accounts counter made of 19.00 mm block board with table top at the height 75 cm and 80 cm wide sunmica 1.0 mm on top and cupboard and sliding key board with provision of fixing of glass in front. Mica pasted on both sides external & internal including all locks & handles Sample bank counter can be seen at our Gomtinagar Branch.	12	Rft		
<b>4</b>	<b>12 MM GLASS ON ACCOUNTS COUNTER</b>				
	12 MM plain glass with rounded edges with etching as per the requirement of bank for Accounts counter (Height: 60 cms) (With teak wood frame 70 cm). Sample bank design can be seen at our Gomtinagar Branch.	20	Sq. ft.		

<b>5</b>	<b>LOW HEIGHT PARTITION /FULL HEIGHT PARTITION</b>				
	Low Height Partition made of both sides 6.00 mm commercial ply laminated with 1.0 mm sunmica on Cheed Wood frame section 50.00 mmx30.00 mm with glass of 12 mm and door made of 100 x 25 cheed wood frame and ply and mica including all locks, handles & bolt, quality polish etc. Sample bank's low height partition .(LOW HEIGHT PARTITION HEIGHT 4'-0")	155	Sq. ft.		
<b>7</b>	<b>COLUMN/WALL PANELLING</b>				
	Providing & fixing in position 2"x2" kailwood frame and finished with 6 mm thk. Commercial ply on both sides with 1.0 mm thk. Laminate on top as per instruction of the Architect.column panelling only 7.5' height	150	Sq. ft.		
<b>8</b>	<b>MANAGER TABLE</b>				
	Manager table 5' by 2'-6" by 2'-6" (height) as/design (The Design by the Bank to be strictly followed) The top to be finished with 12 mm thick bewelled glass with edges duly moulded.The table having 3 drawers on one side one drawers on the other side made of 19mm board with 1 mm mica laminated .locks on all drawers .TheMica pasted on both sides external & internal, foot rest with table. Table to be complete as per specification.	1	No		
<b>9</b>	<b>OFFICER TABLE</b>				
	Officer Table made of 19.00 mm board with sunmica 1.0 mm both sides and front size 135x75x75 (4.5x2.5x2.5) with three drawers on one size and one cupboard and one drawer on the other with lock on all drawers and all cupboards.	0	No		
<b>10</b>	<b>COMPUTER OPERATOR CHAIR</b>				
	Computer Operator Chair with arms, revolving and P.U. base with twin wheel, casters, upholstered in good quality cloth, foam of high density.	3	No		
<b>11</b>	<b>OFFICER CHAIR /MANAGER CHAIR</b>				
	Office chair revolving with moulded foam seat with P.U. arms and P.U. base, with twin wheel casters upholstered in good quality cloth. foam of high density	2	No		
<b>12</b>	<b>VISITOR CHAIR</b>				
	Visitor Chair-without PU Arm and all specification same as to officer chair.	5	No		
<b>13</b>	<b>THREE SEATED NICKEL POLISH BENCH/WOODEN BENCH</b>				
	perforated three seated bench of good quality in nickel polish.	2	No		
<b>14</b>	<b>NOTICE BAORD</b>				
	Notice Board made of 19.00 mm board (size: 3'-0"x3'-0") laminated sides and covered by good quality Cherry Colour Velvet with attached Cheque Writing Desk (6"x6"x9") with attached Two Battens for Support, Sunmica Pasted on all sides.	1	No		
<b>15</b>	<b>CUPBOARD /SIDE STORAGE</b>				

	Cupboard for manager and officer size 4'x1'-6"x2'-6" (120x45x76) cupboard made of 19.00 mm board with 1.00 mm sunmica pasted on all outer sides & locks on all Drawers & all cupboards	1	No		
<b>16</b>	<b>ALUMINIUM ENTRANCE DOOR ( ETCHING WITH BANK LOGO)</b>				
	P/F aluminium glazing in entrance doors with fixed window with 8 m.m. floatglass as/design with top & bottom section of 45 by 90 m.m. 2 m.m. thick section of hindalco/indal anodized in approved colour with 25 micron anodizing along with SS C shaped handles of kitch or equivalent make along with floor spring of hemco/everite make. The item also includes door lock completed to the satisfaction of the architect. This would also include fixed window glazing along with the door of sections matching with the door complete in all respects including all kinds of hardware .	125	Sqft		
<b>17</b>	<b>WRITING DESK INCLUDING SUGGESTION BOX AND CHEQUE DROP BOX</b>				
	Writing ledge of 19 m.m. Phenol bonded board as/design on 19 mmm thick with pockets for slips of 6m.m. glass machine polished with seperators completed to the satisfaction of the architect and the Drawing. The Writing ledge includes a Suggestion box below ,cheque drop box and a notice board above complete to the satisfaction of the Architect.	1	No		
	TOTAL				

LINTAL HT. - 9'-10"  
BEAM BOTTOM -8'-10"

OTHER PROPERTY  
39'-9"



JOB. TITLE-

PROPOSED LAYOUT PLAN FOR  
GRAMIN BANK OF ARYAVART  
BRANCH AT HINGOT KHERIA, AGRA

DRG. TITLE-

LAYOUT PLAN

NORTH-



DATE-

JULY-2014

GUNJAN AND ASSOCIATES

ARCHITECTS, ENGINEERS, INTERIOR  
AND LANDSCAPE DESIGNERS.

3/55, VIPUL KHAND, GOWTI NAGAR,  
LUCKNOW-226010  
Phone: 2305118, 9839018489, 9838818489

**GUNJAN & ASSOCIATES**Architects, Engineers, Interiors &  
Landscape Designers,

3/55, Vipul Khand, Gomti Nagar,

Lucknow-226010.

Phone: 0522-2303118, 9839018489

**E-Mail: arunjan@yahoo.com****LIST OF MATERIALS FOR FURNISHING WORKS****List of Approved Materials**

<b>S. No.</b>	<b>Material</b>	
1	Commercial Board/ Ply Urea Bonded	Corbett, Truwood, duro
2	Laminate	Heritage, Greenlam, Durolam
3	Veneer	Century/Decolam/ Truwood/ Archid
4	Screw(Oxidised)	Gkw/ Nettle Fold
5	Hardware	Earl Bihari / Shalimar
6	Adhesive	Fevicol SH
7	Locks	Godrej
8	Floor Spring/Door Closures	Hyper/ Everite/ Hemco
9	Hinges.Tower Bolts,Handles	Brass Oxidised/ Epoxy Powder Coated (Heavy duty) with Steel Pin
10	Wood and Beadings	Teak Wood, Sal Wood
11	Glass	Modi, Float Glass, Saint Gobain
12	Paints	Nerolac, Berger, Asian, Dulux
13	Ceramic, Vetrified Tiles	Bell, Kajaria, Murudeshwar CeramicsJhonson, Varmora
14	Sanitary Fittings	Hindware, Parryware, Jaguar
15	Aluminium Door and Window Sections	Jindal, Indal and MK
16	Vertical Blinds	Vista, Sun
17	Drawer Channel	Flyrail/ Glydo/ Hettich
18	Soft Board	Cellotex
19	Surface Textures	Spectrum/ Heritage
20	Oil Bound Distemper	Berger Bison, Asian
21	Acrylic Emulsion	Berger Rangoli, Asian
22	Teak Wood	UP Teak
23	Fire Retardant Coating	Viper or Equivalent (Certified by CBRI)