

GUNJAN & ASSOCIATES
Architects, Engineers, Interiors &
Landscape Designers,
3/55, Vipul Khand, Gomti Nagar,
Lucknow-226010.
Phone: 2303118, 9839018489, 9838818489
E-Mail: arunjan@yahoo.com

**FURNISHING ESTIMATE FOR THE PROPOSED INTERIORS FOR
GRAMIN BANK OF ARYAWART DHANUHI KHERA BRANCH**

**THE CONTRACTOR TO USE ONLY THE SPECIFIED MICA .NO OTHER BRAND WILL BE
ACCEPTED.**

NOTES:

1. For doors lowprofile mortice lock 240 no. 1936 with imperial handle of anodised brown color
2. Locks of drawers other than cash should be of Premium multipurpose lock no.5131(ALL TABLES)
3. Locks for cuboards doors - for left handed doors:door no. 5011 & for right handed 5012
4. Floor Spring for the doors should be of floor spring no. 4102
5. Locks for Cash drawers should be multilatch no. 1624
6. Hydraulic door 2 speed no. 4159
7. Cash Cabin & Single Window should have ultra twin bolt no. 4950 / 4951 with inside opening.
8. All types of hardware to be of Godrej make

S.NO.	DESCRIPTION OF ITEM	QTY.	UNIT	RATE	AMOUNT
1	CASH CABIN PARTITION				
	Cash cabin partition made of both side 6.00 mm commercial ply on kail wood frame section 50x35 mm and 1.00 mm mica, aluminum grill partition and mica laminated aluminum grill door complete with locks, top of cash cabin covered by aluminum grill. Including all locks & handles,door closer. Size of cash cabin 5 ft x 7 ft x 7.5 ft, . and include Front of the cash Cabin to be glazed with 12 mm thick etching glass fixed in position by teak wood members complete to the satisfaction of the architect.The cash cabin to have night latches as per direction of the architect.This would also include decorative aluminium jali at the top of cash cabins fixed with teak wood members.(CASH CABIN TOP IS NOT INCLUDED IN THE MEASUREMENT)	240	Sft		
2	CASH COUNTER				
	Bank counter of approved design for cashier made of 19.00 mm commercial block board and mica 1.00 mm thick of approved brand and colour on front customer top and writing desk. Height of counter from customer side 114 cm (45").width of writing desk 75 cm.(30") with provision of cupboard after every 1.20 mts made of 19.00 mm block board with 1.0 mm sunmica pasted on both side(inner and outer) , and teakwood beading complete with quality polish finish. Mica pasted on both sides external & internal including all locks & handles with door closer .	10	Rft		

3	ACCOUNTS COUNTER				
	Accounts counter made of 19.00 mm block board with table top at the height 75 cm and 80 cm wide sunmica 1.0 mm on top and cupboard and sliding key board with provision of fixing of glass in front. Mica pasted on both sides external & internal including all locks & handles Sample bank counter can be seen at our Gominagar Branch.	20	Rft		
4	12 MM GLASS ON ACCOUNTS COUNTER				
	12 MM plain glass with rounded edges with etching as per the requirement of bank for Accounts counter (Height: 60 cms) (With teak wood frame 70 cm). Sample bank design can be seen at our Gominagar Branch.	40	Sq. ft.		
5	LOW HEIGHT PARTITION /FULL HEIGHT PARTITION				
	Low Height Partition made of both sides 6.00 mm commercial ply laminated with 1.0 mm sunmica on Cheed Wood frame section 50.00 mmx30.00 mm with glass of 12 mm and door made of 100 x 25 cheed wood frame and ply and mica including all locks, handles & bolt, quality polish etc. Sample bank's low height partition .(LOW HEIGHT PARTITION HEIGHT 4'-0")	180	Sq. ft.		
6	COUNTER SIDE PARTITION				
	Partition made of both sides 6.00 mm commercial ply laminated with 1.0 mm sunmica on Cheed Wood frame section 50.00 mmx30.00 mm with glass of 12 mm and door made of 100 x 25 cheed wood frame and ply and mica including all locks, handles & bolt, quality polish etc.	30	Sq. ft.		
7	COLUMN/WALL PANELLING				
	Providing & fixing in position 2"x2" kailwood frame and finished with 6 mm thk. Commercial ply on both sides with 1.0 mm thk. Laminate on top as per instruction of the Architect.column panelling only 7.5' height(ONLY HALL AREA)	50	Sq. ft.		
8	MANAGER TABLE				
	Manager table 5' by 2'-6" by 2'-6" (height) as/design (The Design by the Bank to be strictly followed) The top to be finished with 6 mm thick bewelled glass with edges duly moulded.The table having 3 drawers on one side one drawers on the other side made of 19mm board with 1 mm mica laminated .locks on all drawers .TheMica pasted on both sides external & internal, foot rest with table. Table to be complete as per specification.	1	No		
9	OFFICER TABLE				
	Officer Table made of 19.00 mm board with sunmica 1.0 mm both sides and front size 135x75x75 (4.5x2.5x2.5) with three drawers on one size and one cupboard and one drawer on the other with lock on all drawers and all cupboards.	1	No		
10	COMPUTER OPERATOR CHAIR				
	Computer Operator Chair with arms, revolving and P.U. base with twin wheel, casters, upholstered in good quality cloth, foam of high density.	5	No		

11	OFFICER CHAIR /MANAGER CHAIR				
	Office chair revolving with moulded foam seat with P.U. arms and P.U. base, with twin wheel casters upholstered in good quality cloth. foam of high density	2	No		
12	VISITOR CHAIR				
	Visitor Chair-without PU Arm and all specification same as to officer chair.	7	No		
13	THREE SEATED NICKEL POLISH BENCH				
	perforated three seated bench of good quality in nickel polish.	3	No		
14	NOTICE BAORD				
	Notice Board made of 19.00 mm board (size: 3'-0"x3'-0") laminated sides and covered by good quality Cherry Colour Velvet with attached Cheque Writing Desk (6"x6"x9") with attached Two Battens for Support, Sunmica Pasted on all sides.	1	No		
15	CUPBOARD /SIDE STORAGE				
	Cupboard for manager and officer size 4'x1'-6"x2'-6" (120x45x76) cupboard made of 19.00 mm board with 1.00 mm sunmica pasted on all outer sides & locks on all Drawers & all cupboards	3	No		
16	ALUMINIUM ENTRANCE DOOR (ETCHING WITH BANK LOGO)				
	P/F aluminium glazing in entrance doors with fixed window with 8 m.m. floatglass as/design with top & bottom section of 45 by 90 m.m. 2 m.m. thick section of hindalco/indal anodized in approved colour with 25 micron anodizing along with SS C shaped handles of kitch or equivalent make along with floor spring of hemco/everite make. The item also includes door lock completed to the satisfaction of the architect.This would also include fixed window glazing along with the door of sections matching with the door complete in all respects including all kinds of hardware .(height lintel lvl -8'6")	90	Sqft		
17	WRITING DESK INCLUDING SUGGESTION BOX AND CHEQUE DROP BOX				
	Writing ledge of 19 m.m. Phenol bonded board as/design on 19 mmm thick with pockets for slips of 6m.m. glass machine polished with seperators completed to the satisfaction of the architect and the Drawing. The Writing ledge includes a Suggestion box below ,cheque drop box and a notice board above complete to the satisfaction of the Architect.	1	No		
18	FLAP DOOR				
	P/f 32mm thick flap doors, laminated on both sides as per the approval.	3	No		

19	LOW HEIGHT STORAGE				
	a. Rear Storage /Top Storage cabinets 1'-4" deep of 19mm. Urea bonded block board of approved make laminated with 1mm.thick laminate on sides and the cabinet shutters. The cabinet to have 12mm urea bonded ply at back. With shelves etc. All edges to have TW lipping as/design duly melamine polished. The item included all hardware such as self closing hinges of hettich/kaff, handles, locks etc. The interior of the cabinet to be enamel painted completed to the satisfaction of the architect.	60.00	Sqft		
	TOTAL				

job title

**PROPOSED LAYOUT PLAN OF
GRAMIN BANK OF ARYAVART
AT DHANUHI KHERA, UNNAO.**

Drg. Title

LAYOUT PLAN

Date :-

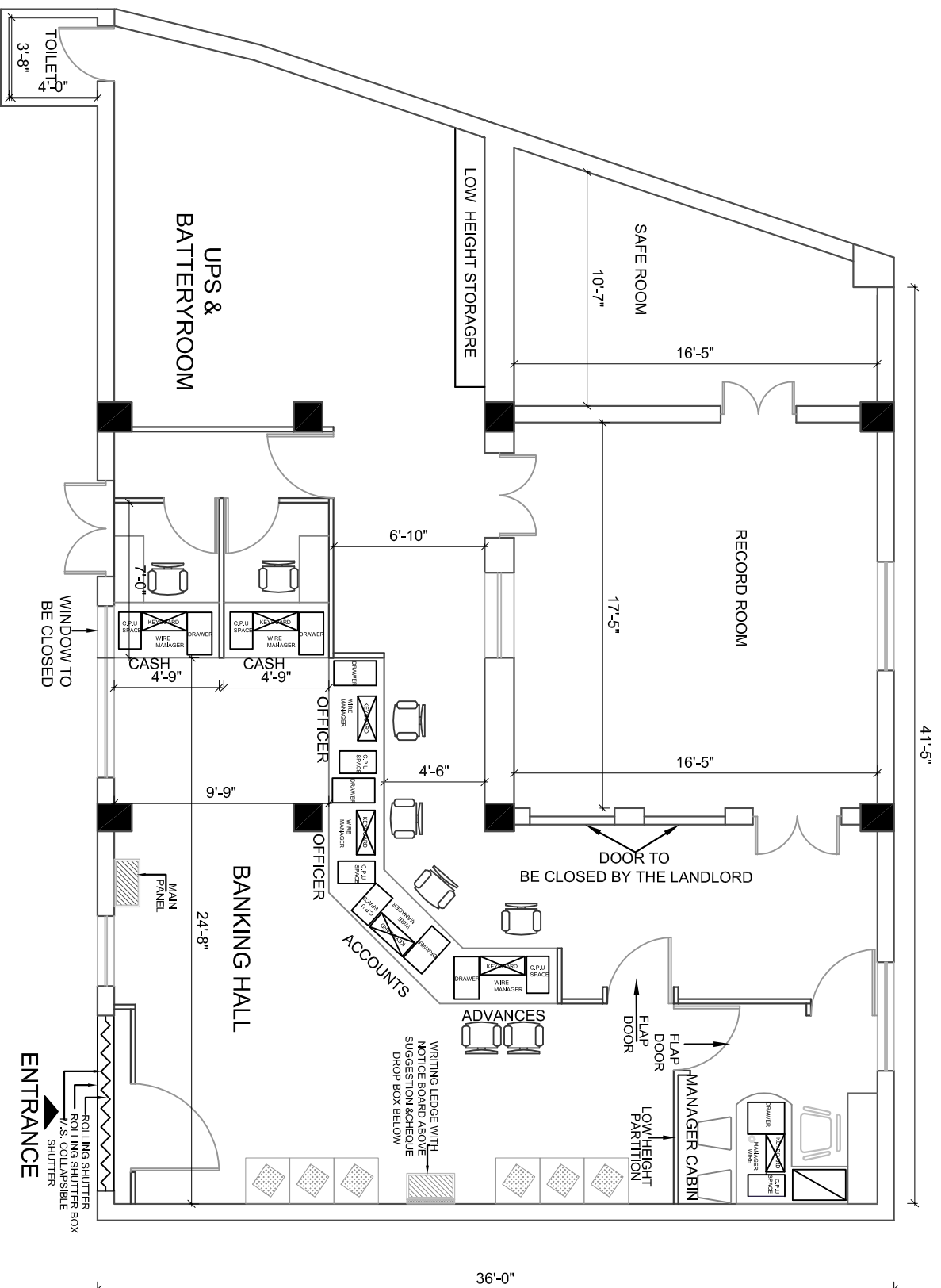
NOV -2013

NORTH :-



GUNJAN AND ASSOCIATES
ARCHITECTS, ENGINEERS, INTERIOR
AND LANDSCAPE DESIGNERS.

3/55, VIPUL KHAND, GOMTI NAGAR,
LUCKNOW-226010
Phone: 2303118, 9839018489, 9838818489



GUNJAN & ASSOCIATESArchitects, Engineers, Interiors &
Landscape Designers,

3/55, Vipul Khand, Gomti Nagar,

Lucknow-226010.

Phone: 0522-2303118, 9839018489

E-Mail: arunjan@yahoo.com**LIST OF MATERIALS FOR FURNISHING WORKS****List of Approved Materials**

S. No.	Material	
1	Commercial Board/ Ply Urea Bonded	Corbett, Truwood, duro
2	Laminate	Heritage, Greenlam, Durolam
3	Veneer	Century/Decolam/ Truwood/ Archid
4	Screw(Oxidised)	Gkw/ Nettle Fold
5	Hardware	Earl Bihari / Shalimar
6	Adhesive	Fevicol SH
7	Locks	Godrej
8	Floor Spring/Door Closures	Hyper/ Everite/ Hemco
9	Hinges.Tower Bolts,Handles	Brass Oxidised/ Epoxy Powder Coated (Heavy duty) with Steel Pin
10	Wood and Beadings	Teak Wood, Sal Wood
11	Glass	Modi, Float Glass, Saint Gobain
12	Paints	Nerolac, Berger, Asian, Dulux
13	Ceramic, Vetrified Tiles	Bell, Kajaria, Murudeshwar CeramicsJhonson, Varmora
14	Sanitary Fittings	Hindware, Parryware, Jaguar
15	Aluminium Door and Window Sections	Jindal, Indal and MK
16	Vertical Blinds	Vista, Sun
17	Drawer Channel	Flyrail/ Glydo/ Hettich
18	Soft Board	Cellotex
19	Surface Textures	Spectrum/ Heritage
20	Oil Bound Distemper	Berger Bison, Asian
21	Acrylic Emulsion	Berger Rangoli, Asian
22	Teak Wood	UP Teak
23	Fire Retardant Coating	Viper or Equivalent (Certified by CBRI)